



# MONTHLY MEMBERSHIP PROGRESS REPORT

Results as of: 5/31/2015

Multiple District 4

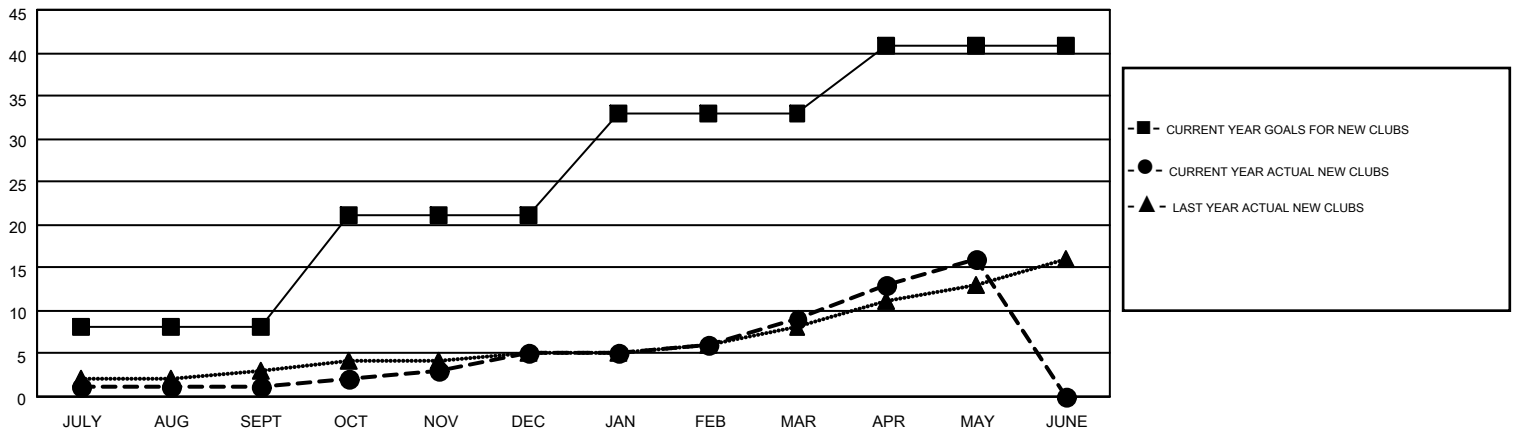
LOCATION: CALIFORNIA

GMT: GARY WONG

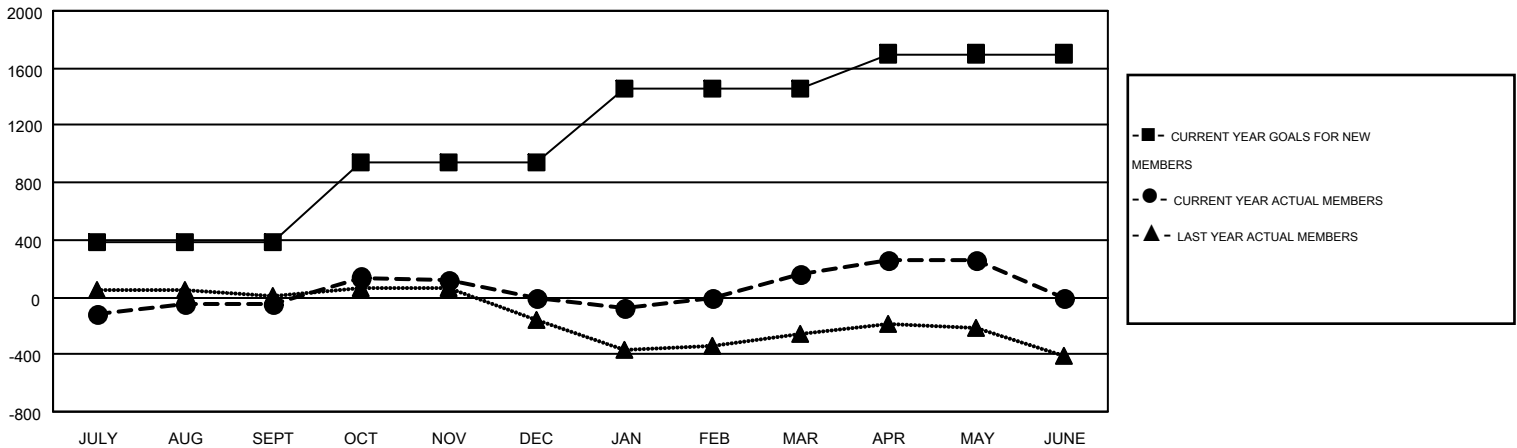
GMT CA 1

| Clubs                 |               |           |               |               | Members               |                 |                               |                 |               |
|-----------------------|---------------|-----------|---------------|---------------|-----------------------|-----------------|-------------------------------|-----------------|---------------|
| RESULTS FOR 2014-2015 |               |           |               |               | RESULTS FOR 2014-2015 |                 |                               |                 |               |
| QUARTER               | NEW CLUB GOAL | NEW CLUBS | DROPPED CLUBS | NET GAIN/LOSS | QUARTER               | NEW MEMBER GOAL | CHARTER AND NEW MEMBERS ADDED | DROPPED MEMBERS | NET GAIN/LOSS |
| JULY/AUG/SEPT         | 8             | 1         | 1             | 0             | JULY/AUG/SEPT         | 385             | 837                           | 886             | -49           |
| OCT/NOV/DEC           | 13            | 4         | 10            | -6            | OCT/NOV/DEC           | 555             | 778                           | 732             | 46            |
| JAN/FEB/MAR           | 12            | 4         | 1             | 3             | JAN/FEB/MAR           | 514             | 734                           | 572             | 162           |
| APR/MAY/JUNE          | 8             | 7         | 0             | 7             | APR/MAY/JUNE          | 246             | 522                           | 425             | 97            |

GOALS AND ACTUAL NEW CLUBS CUMULATIVE



GOALS AND ACTUAL MEMBERS CUMULATIVE



|                        |  |   |                 |                     |       |
|------------------------|--|---|-----------------|---------------------|-------|
| DROPPED CLUBS: 12      | 523 CLUBS OF 739 ADDED 1 OR MORE NEW MEMBERS | <u>GENDER DISTRIBUTION</u>                            |                 |                     |       |
| <u>DROPPED MEMBERS</u> |  | MALE  | 13,623 (65.84%) |                     |       |
| DECEASED               | 251  | FEMALE  | 7,068 (34.16%)  |                     |       |
| CLUB CANCELLED         | 70   | <a href="#">CLICK HERE FOR HEALTH ASSESSMENT DATA</a> |                 |                     |       |
| OTHER                  | 2,294  |   |                 | FAMILY UNIT MEMBERS | 3,594 |
| TOTAL                  | 2,615  |   |                 | HEAD OF HOUSEHOLD   | 1,717 |
|                        |  | NON-HEAD OF HOUSEHOLD                                 | 1,877           |                     |       |